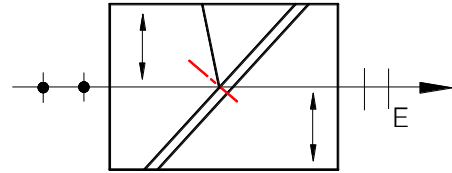




Glan Taylor Polarizer

Specifications:

1. Material: Calcite, α -BBO
2. Wavelength Range: Calcite 350~2300nm
 α -BBO 200~3500nm
3. Surface Quality: 20/10
4. Beam Deviation: <3 arc min
5. Coating: Single Layer MgF₂
6. Housing: Black Anodized Aluminum



- Product Code:

PGT-Material-Type No-C.A.

Type No:

“01”-200~280nm;

“02”-400~700nm;

“03”-700~3500nm;

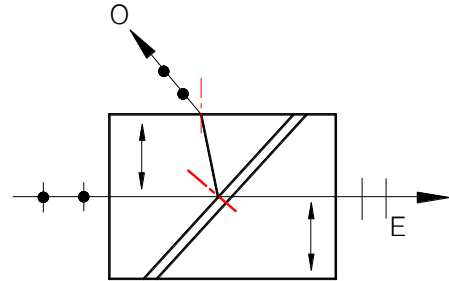
Product Code	Material	Wavelength Range(nm)	Extinction Ratio	Field Angle	C.A. (mm)	Mounting Size(mm)
PGT00703-08	Calcite	350~2300	$<5 \times 10^{-5}$	$>7.5^\circ$	D8	D25.4×17.0
PGT00703-10					D10	D25.4×19.0
PGT00703-15					D15	D30.0×23.0
PGT00901-08	α -BBO	200~280	$<5 \times 10^{-6}$	$>6^\circ$	D8	D25.4×17.0
PGT-00901-10					D10	D25.4×19.0
PGT00901-15					D15	D30.0×23.0
PGT00902-08	α -BBO	300~700	$<5 \times 10^{-6}$	$>6^\circ$	D8	D25.4×17.0
PGT00902-10					D10	D25.4×19.0
PGT00902-15					D15	D30.0×23.0
PGT00903-08	α -BBO	700~3500	$<5 \times 10^{-6}$	$>6^\circ$	D8	D25.4×17.0
PGT00903-10					D10	D25.4×19.0
PGT00903-15					D15	D30.0×23.0



Glan Laser Polarizer

Specifications:

1. Material: Calcite, α -BBO
2. Wavelength Range: Calcite 350~2300nm
 α -BBO 200~3500nm
3. Surface Quality: 20/10
4. Beam Deviation: <3 arc min
5. Coating: Single Layer MgF2
6. Housing: Black Anodized Aluminum



- Product Code:

PGL-Material-Type No-C.A.

Type No:

- “01”-200~280nm;
- “02”-300~2000nm;
- “03”-700~3500nm;

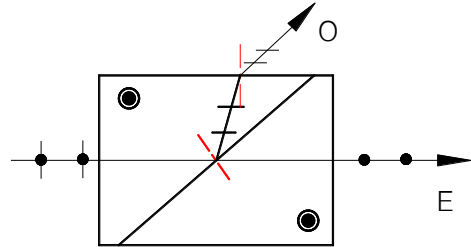
Product Code	Material	Wavelength Range(nm)	Extinction Ratio	Field Angle	C.A. (mm)	Mounting Size(mm)
PGL00702-08	Calcite	350~2300	$<5 \times 10^{-5}$	$>7.5^\circ$	D8	D25.4x24.5
PGL00702-10					D10	D25.4x26.2
PGL00702-15					D15	D30.0x33.3
PGL00901-08	α -BBO	200~280	$<5 \times 10^{-6}$	$>6^\circ$	D8	D25.4x31.0
PGL00901-10					D10	D25.4x31.0
PGL00901-15					D15	D30.0x38.6
PGL00902-08		300~700	$<5 \times 10^{-6}$	$>6^\circ$	D8	D25.4x25.1
PGL00902-10					D10	D25.4x26.0
PGL00902-15					D15	D30.0x33.4
PGL00903-08		700~3500	$<5 \times 10^{-6}$	$>6^\circ$	D8	D25.4x24.7
PGL00903-10					D10	D25.4x25.9
PGL00903-15					D15	D30.0x33.0



Glan-Thompson Polarizer

Specifications:

1. Material: Calcite, α -BBO
2. Wavelength Range: Calcite 350~2300nm
 α -BBO 200~1100nm
3. Surface Quality: 20/10
4. Beam Deviation: <3 arc min
5. Coating: Single Layer MgF₂
6. Housing: Black Anodized Aluminum



- Product Code:

PGS-Material-C.A.

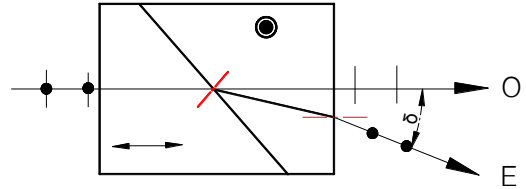
Product Code	Material	L/CA	Extinction Ratio	Field Angle	C.A. (mm)	Mounting Size(mm)
PGS007-08	Calcite	25	$<5 \times 10^{-6}$	$14^{\circ} \sim 16^{\circ}$	D8	D25.4x28.0
PGS007-10					D10	D25.4x33.0
PGS009-08	α -BBO	1.6	$<5 \times 10^{-5}$	$>15^{\circ}$	D8	D25.4x21.0
PGS009-10					D10	D25.4x25.5
PGS009-15					D15	D25.4x34.3



Rochon Polarizer

Specifications:

1. Material: Quartz, α -BBO
2. Wavelength Range: Quartz 200~2300nm
 α -BBO 200~3500nm
3. Surface Quality: 20/10
4. Coating: Single Layer MgF_2
5. Housing: Black Anodized Aluminum



- Product Code:
PRH- Material-C.A.

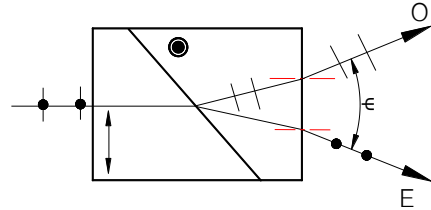
Product Code	Material	Extinction Ratio	Separation Angle	C.A. (mm)	Mounting Size(mm)
PRH-005-08	Quartz	$<5 \times 10^{-5}$	$1^\circ @ 1064\text{nm}$	D8	D25.4x18.0
PRH-005-10				D10	D25.4x18.0
PRH-005-15				D15	D25.4x20.0
PRH-009-08	α -BBO	$<5 \times 10^{-6}$	$8.05^\circ @ 800\text{nm}$	D8	D25.4x18.0
PRH-009-10				D10	D25.4x18.0
PRH-009-15				D15	D30.0x23.0



Wollaston Polarizer

Specifications:

1. Material: Quartz、Calcite、 α -BBO
2. Wavelength Range: Quartz 200~2300nm
Calcite 350~2300nm
 α -BBO 200~3500nm
3. Surface Quality: 20/10
4. Beam Deviation: <3 arc min
5. Coating: Single Layer MgF2
6. Housing: Black Anodized Aluminum



- Product Code:

PWS-Material-C.A.

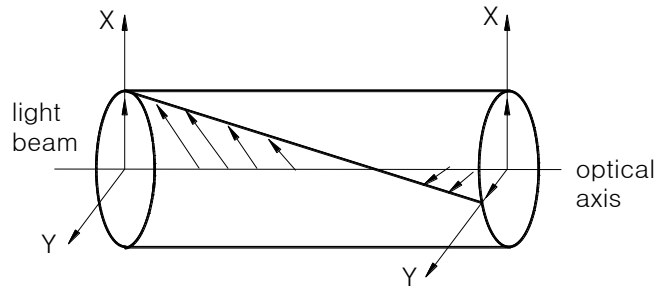
Product Code	Material	Extinction Ratio	Field Angle	C.A. (mm)	Mounting Size(mm)
PWS-005-08	Quartz	$<5 \times 10^{-5}$	2°~3° 2°@1064nm	D8	D25.4x24.0
PWS-005-10				D10	D25.4x28.8
PWS-005-15				D15	D30.0x38.0
PWS-007-08	Calcite	$<5 \times 10^{-5}$	16.7°~22.5° 19°@990nm	D8	D25.4x16.0
PWS-007-10				D10	D25.4x18.0
PWS-007-15				D15	D30.0x23.0
PWS-009-08	α -BBO	$<5 \times 10^{-6}$	15°~27° 16°@900nm	D8	D25.4x16.0
PWS-009-10				D10	D25.4x18.0
PWS-009-15				D15	D30.0x23.0



Polarization Rotator

Specifications:

1. Material: Quartz
2. Surface Quality: 20/10
3. Flatness: $<\lambda/10$ @ 633nm
4. Parallelism: <10 arc sec
5. Rotation Tolerance: $<0.5^\circ$
6. Coating: AR/AR, $R<0.25\%$
7. Wavelength Range: 248~1550nm



- Product Code:

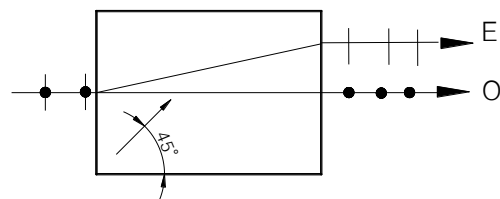
QPR-Material-Size-Center Wavelength-Rotation Angle

Size=Diameter

Beam Displacer

Specifications:

1. Material: YVO4, Calcite, LiNbO3, α -BBO
2. Surface Quality: 10/5
3. Flatness: $\lambda/4$ @ 633nm
4. Wedge: <15 arc sec
5. Perpendicularity: 10 arc min
6. Coating: AR Coating, $R<0.25\%$



- Product Code:

BDP+ Material-Size-Center Wavelength



Polarizing Cube Beamsplitters

Specifications:

1. Material: H-K9L, H-ZF3
2. Surface Quality: 40/20
3. Flatness: $\lambda/4 \sim \lambda/8$ @ 633nm
4. Beam Deviation: < 5 arc min
5. Extinction Ratio: $> 400:1 \sim 1000:1$
6. Coating:

Single Wavelength $T_p > 95\%$, $R_s > 99.5\%$;

In all the right angles to the surface AR coated, $R < 0.2\%$

Broadband $T_{pavg} > 92\%$, $R_{savg} > 99.5\%$

In all the right angles to the surface AR coated, $R_{avg} < 0.5\%$

7. Broadband: 420~680nm
620~1000
900~1300nm
1200~1600nm

- Product Code:
PBS+ Material-Size-Center Wavelength
Size=AxBxL

