

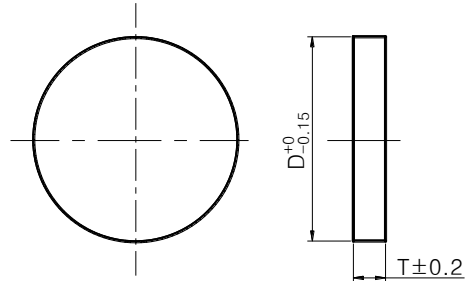


Windows

Specifications:

Standard Windows

1. Material: H-K9L or Fused Silica
2. Surface Quality: 60/40
3. Surface Flatness: $\lambda/4@633\text{nm}$
4. Wedge: 3 arc min
5. Clear Aperture: \geq central 80% of diameter



High Precision Windows

1. Material: H-K9L or Fused Silica
2. Surface Quality: $\leq 10/5$
3. Surface Flatness: $\leq \lambda/8$ or $\text{TWD} \leq \lambda/10 @ 633\text{nm}$
4. Wedge: ≤ 1 arc sec
5. Clear Aperture: \geq central 80% of diameter

- Windows Code:

WIN+Material Code-Size- Surface Quality- Surface Flatness - Wedge –Coating

- Plate Code:

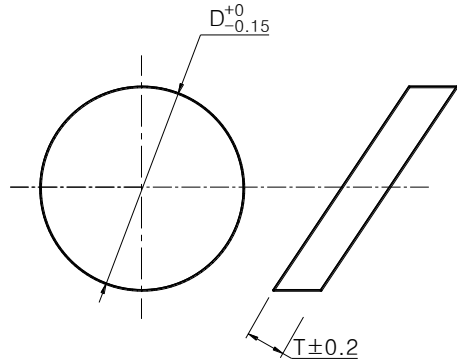
PLA+Material Code-Size- Surface Quality- Surface Flatness - Wedge –Coating



Brewster Window

Specifications:

1. Material: H-K9L or Fused Silica
2. Surface Quality: 10/5~60/40
3. Surface Flatness: $\lambda/10$ or TWD $<\lambda/10$ @ 633nm
4. Wedge: 3 arc min~2 arc sec
5. Clear Aperture: \geq central 80% of diameter



- Product Code:

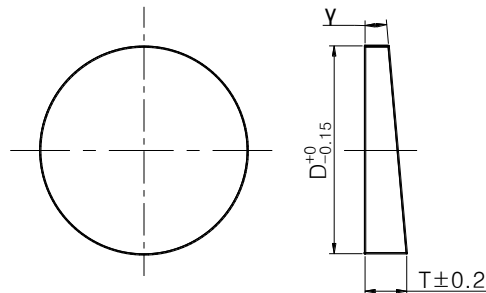
BWT+Material Code-Size- Surface Quality- Surface Flatness - Wedge –Coating

Wedge Window

Specifications:

Standard Wedge Window

1. Material: H-K9L or Fused Silica
2. Surface Quality: 60/40
3. Surface Flatness: $\lambda/4$ or TWD $<\lambda/4$ @633nm
4. Angles: ± 3 arc min
5. Clear Aperture: 80% Diameter



High Precision Wedge Window

1. Material: H-K9L or Fused Silica
2. Surface Quality: 10/5~40/20
3. Surface Flatness: $\leq \lambda/10$ or TWD $<\lambda/10$ @633nm
4. Angle Tolerance: ≤ 10 arc sec
5. Clear Aperture: \geq central 80% of diameter

- Product Code:

WEG+Material Code-Size- Surface Quality-Surface Flatness-Wedge-Coating